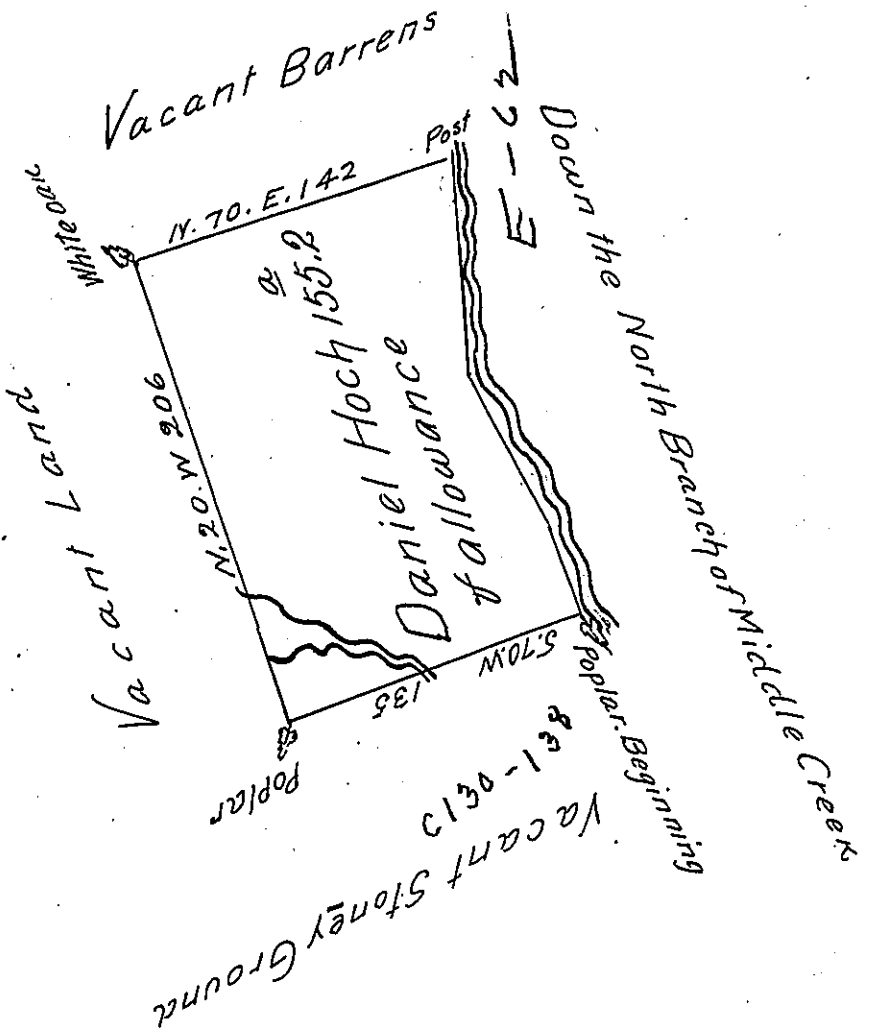


Courses Down the Creek.

S 6. E 93
 S 32. E 77
 S 20 E 40
 210 P



The Draught of a Tract of Land Called _____ situate in
 Penns Township Northumberland County Containing One
 hundred and Fifty five acres and Thirty two Perches with
 the usual allowance of six ^{acres} p Cent for Roads &c.
 Surveyed the 7th day of Norember Anno Domini 1774
 In pursuance of a Warrant from the Honoble the Propri-
 etaries to Daniel Hoch. Bearing date the 9th day of
 May 1774

p-W^m Maclay

To John Lukens Esquire S. G.
 of Pennsylvania

IN TESTIMONY that the above is a copy of the original remaining on file in
 the Department of Internal Affairs of Pennsylvania, made
 conformably to an Act of Assembly approved the 16th day of
 February, 1833, I have hereunto set my Hand and caused
 the Seal of said Department to be affixed at Harrisburg,
 this seventh day of March 1905

Isaac R. Brown
 Secretary of Internal Affairs.